



MONTHLY MEMBERSHIP PROGRESS REPORT

Results as of: 11/30/2014

Multiple District 3

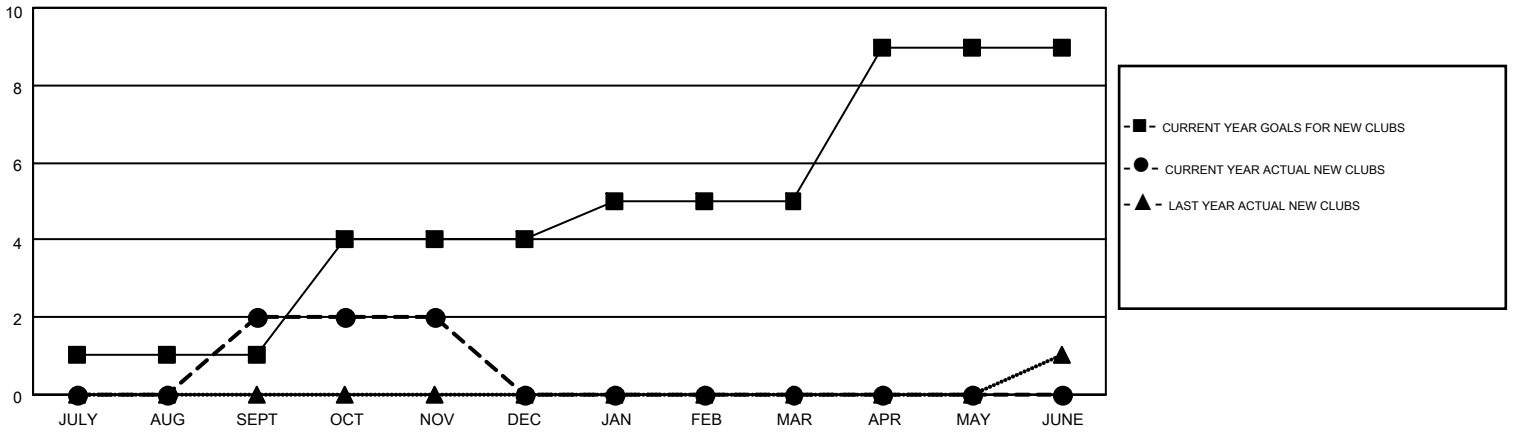
LOCATION: OKLAHOMA

GMT: HAL GRIFFIN

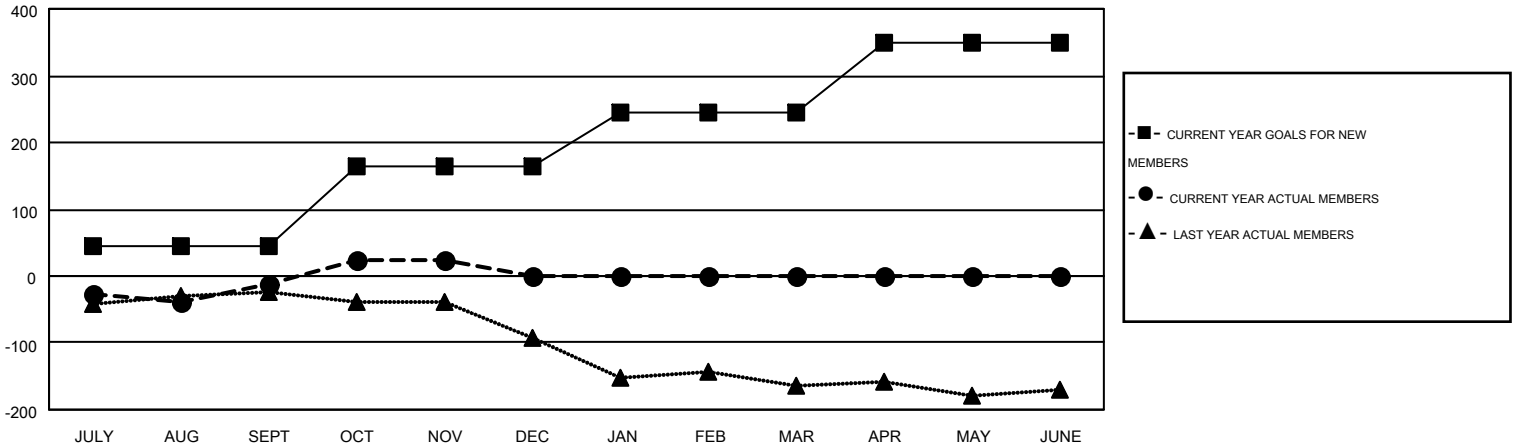
GMT CA 1

Clubs					Members				
RESULTS FOR 2014-2015					RESULTS FOR 2014-2015				
QUARTER	NEW CLUB GOAL	NEW CLUBS	DROPPED CLUBS	NET GAIN/LOSS	QUARTER	NEW MEMBER GOAL	CHARTER AND NEW MEMBERS ADDED	DROPPED MEMBERS	NET GAIN/LOSS
JULY/AUG/SEPT	1	2	1	1	JULY/AUG/SEPT	46	167	178	-11
OCT/NOV/DEC	3	0	0	0	OCT/NOV/DEC	118	103	69	34
JAN/FEB/MAR	1	0	0	0	JAN/FEB/MAR	82	0	0	0
APR/MAY/JUNE	4	0	0	0	APR/MAY/JUNE	103	0	0	0

GOALS AND ACTUAL NEW CLUBS CUMULATIVE



GOALS AND ACTUAL MEMBERS CUMULATIVE



DROPPED CLUBS: 1	89 CLUBS OF 175 ADDED 1 OR MORE NEW MEMBERS	<u>GENDER DISTRIBUTION</u>	
		MALE	3,191 (70.86%)
		FEMALE	1,312 (29.14%)
<u>DROPPED MEMBERS</u>		<u>FAMILY UNIT MEMBERS</u> 641	
DECEASED	22	<u>HEAD OF HOUSEHOLD</u> 311	
CLUB CANCELLED	13	<u>NON-HEAD OF HOUSEHOLD</u> 330	
OTHER	212		
TOTAL	247		

[CLICK HERE FOR HEALTH ASSESSMENT DATA](#)